

FORMER SAWMILL: 14,400SF
The Mill District, North
Amherst



Cowls' former mill building was built in 2004 and features clear spans and open spaces that can be easily reconfigured for re-use.

400 sf of the building is already two-story finished space.

The rest of the space can be built out as two stories for a total of 29,000 sf of space.



The entire building is sprinklered and on town water and sewer

SAWMILL

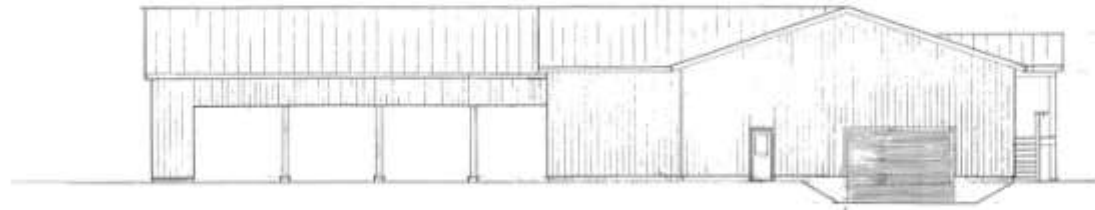
Net Conds. - Wood Processing Facility



MANUFACTURER: WOOD PROCESSING FACILITY
SCHEDULED DATE: 1985
BUILDING AREA: 4180 SQ FT
BUILDING HEIGHT: 17'-0"
NUMBER OF BAYS: 3
UNIT NUMBER: 01

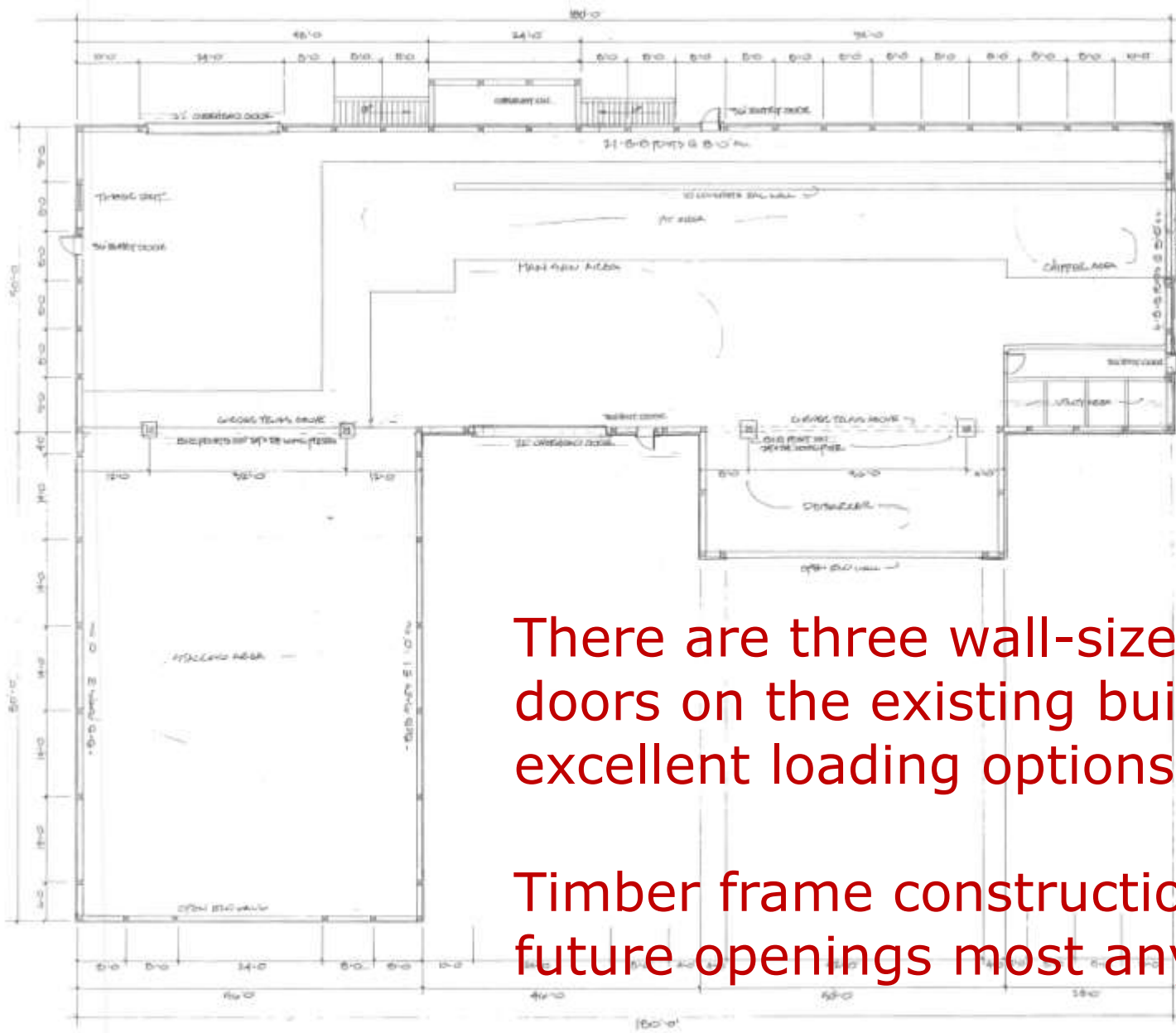
UNIT 1: 130' x 32' - 4160 SQ FT
UNIT 2: 130' x 32' - 4160 SQ FT
UNIT 3: 130' x 32' - 4160 SQ FT

GENERAL NOTES:
1. SEE SPECIFICATIONS AND NOTES FOR MATERIALS AND METHODS.
2. PROVIDE AND MAINTAIN CLEARANCE AT ALL TIMES.
3. PROVIDE AND MAINTAIN CLEARANCE AT ALL TIMES.
4. PROVIDE AND MAINTAIN CLEARANCE AT ALL TIMES.



Overall Bldg Plans

W.D. COWLES, INC.
WOOD PROCESSING FACILITY



There are three wall-sized overhead doors on the existing building, offering excellent loading options.

Timber frame construction allows future openings most anywhere.



SEAMLESS FLOOR PLAN
4/11/13